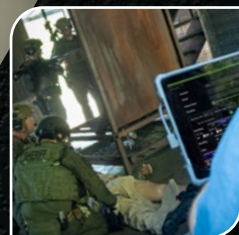


# MILITARY



# SIMULATIONS

*NAR Simulation  
Product Guide*



**NORTH AMERICAN RESCUE®**

Simulation



Tactical Operation  
Medical Manikin SERIES

# TOMManikin®

**BASIC | BLAST | GSW | WATER | CONFINED SPACE | BURN | CBRNE | FEMALE**

*Rugged, state-of-the-art training simulators, NARS TOMManikin® Series provides the comprehensive solution for enhanced training in Tactical Combat Casualty Care (TCCC) from Point of Injury to transfer of higher care!*

- **All-in-one, hyper-realistic trauma simulation solution** enabling instructors to build multiple realistic traumatic casualty scenarios with reactive patients  
Ideal for use in classroom settings, trauma lanes and field training scenarios
- **Multiple, interchangeable extremities** present a variety of wounding patterns to provide full mission profiles in combat scenarios and disaster/mass casualty re-creations
- **Solid metal bones and joints** constructed of welded steel for unparalleled durability and quick exchange leg joints for flexibility in the most austere environments
- **Proprietary silicone skins** available in light, medium or dark skin tones that will not break down during prolonged UV exposure or extreme temperatures
- **180 lb manikin** provides extremities capable of withstanding up to 6,000 lb of pressure - Ideal for building collapse/entrapment training scenarios beyond conventional exercises
- **Ruggedized remote controls** provide simultaneous long-range communications with multiple NARS devices all from a single device!



## SPECIAL FEATURES

### Interactive Animatronics:

- Lifelike Breathing Mechanisms
- Functional Anatomical Airway
- Variable Radial Pulse Rates & Pressure
- High Fidelity Bleeding from Multiple Wounds
- Customizable, Multi-language Voice Tracks
- Rugged Softech® Skin in a variety of skin tones

### Wireless Controls:

- MILSPEC Wireless Remote Instructor Tablet & Software
- Stand alone point-to-point communications with .5 mile line of site range

### Flexible Wound Configurations:

**Basic | Blast | GSW | Water | Confined Space | Burn | CBRNE**  
Custom configurations including Female Anatomy on request

## Clinical Interventions available on ALL TOMManikins:

### MASSIVE HEMORRHAGE:

- **Tourniquet Application** (proximal, junctional & abdominal)
- **Active Bleeding Control** by Direct Pressure on Pressure Points
- **Wound Packing**

### ADVANCED AIRWAY:

- **Nasopharyngeal/Oral/Supraglottic Airway** Insertion
- **Endotracheal Intubation**
- **Surgical Airway** and **Tissue Dissection** with Realistic Bleeding

### RESPIRATIONS:

- **Chest Seal Application**
- **Bilateral Needle Decompression**
- **Chest Tube Capable**

### CIRCULATION:

- **CPR Chest Compressions**
- **Antecubital IV Access** on uninjured upper limbs
- **IO** (sternal & humeral)



**NORTH AMERICAN RESCUE®**

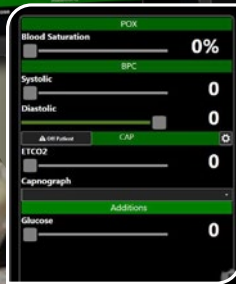
Simulation



## Every TOMManikin® includes:

- **ACCESSORY KIT**
  - 2 x NiMH rechargeable batteries (5-amp & 10-amp) with independent chargers
  - 1 x T-handle wrench
  - Replacement connectors
  - 5-pack of surgical airway neck skins (35 op sites)
  - 8 oz concentrated sim blood
  - NARS mil spec-rated tablet
  - 2 x 3-wheeled transport and storage carriers designed for TOMM

- 1 x NAR IFAK
- Instructor-worn 2-way communications headset
- **VELCRO UNIFORM**
  - Digital pattern
  - Sand color scheme
  - Blouse features Velcro sleeves and lateral seams
  - Trousers feature Velcro inseam and lateral seams
  - Button fly



## MILSPEC INSTRUCTOR TABLET with Scenario Preset Builder Software

### Features:

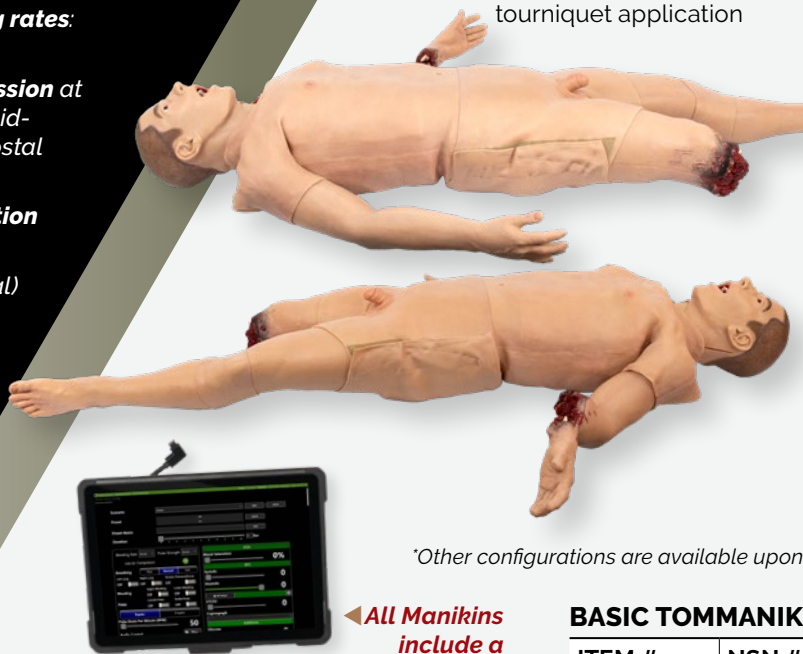
- Features proprietary communication link that requires NO Wi-Fi, Bluetooth, or LAN connections
- Simultaneous long-range communications with numerous NARS devices
- NO interference risk with telemetry, avionics, or weapon systems

### MILSPEC Rated:

- **Operating:** -20 to 60°C (-4 to 140°F)  
MIL-STD-810G, Method 501.5 Procedure II
- **Storage:** -40 to 70°C (-40 to 158°F)  
MIL-STD-810G, Method 501.5/502.5 Procedure I
- **Water:** IP65, IEC 60529
- **Drop/Shock:** 26 drops from 1.2 m (4 ft) MIL-STD-810G, Method 516.6 Procedure IV
- **Vibration:** MIL-STD-810G, Method 514.6 Procedures I, II
- **Sand/Dust:** IP65, IEC 60529
- **Humidity:** 0 ~ 95% (non-condensing) MIL-STD-810G, Method 507.5
- **Altitude:** 4572 m (15,000 ft) MIL-STD-810G, Method 500.5 Procedure I



- **Tourniquet Application** (proximal, junctional, and abdominal tourniquets)
- **Active bleeding** controllable by **direct pressure** on pressure points
- **Wound packing** with realistic bleeding control
- **Nasopharyngeal and oral airways, supraglottic airway** insertion and **endotracheal intubation**
- **Surgical airway** with realistic bleeding and tissue dissection 35 operative sites included
- Remote controlled **breathing rates:** Slow, Normal, and Fast
- **Bilateral Needle Decompression** at either 2nd/3rd intercostal (mid-clavicular), or 5th/6th intercostal (mid-axillary) locations
- Realistic **chest seal application** & adhesion
- **Chest Tube** capable (bilateral)
- **Radial pulses** in uninjured upper extremities & bilateral carotid pulses
- **CPR Chest Compressions**
- **Variable pulse rate & pressure** (Normal, bounding, thready)
- **IO** (sternal & humeral) and **antecubital IV access** on uninjured upper limbs



◀ **All Manikins include a MILSPEC-rated instructor tablet**

## BASIC TOMManikin®

### BASIC Wounding Patterns:

- 1. Partial Arm Amputation below the elbow** with Massive bleeding and dramatic soft tissue damage, exposed hard bone and discernible tissue layers Responds to tourniquet application or brachial artery direct pressure application
- 2. Full Amputation Leg** with massive bleeding, extensive soft tissue damage, exposed hard bone, visible tissue layers. Responds to direct junctional pressure and tourniquet application



\*Other configurations are available upon request

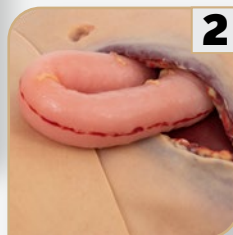
### BASIC TOMMANIKIN® \*

ITEM #	NSN #
93-0035	6910-01-705-3108

## BLAST TOMManikin®

### BLAST Wounding Patterns:

- 1. Open Jaw Fracture Head Skin** with massive maxillofacial bone and soft tissue injuries, actively bleeds. Supports OP/NP/ET/ Surgical airways
- 2. Packable Abdominal Evisceration** with intricate handcrafted attention to anatomical detail with visible tissue layers, and 10 in. of eviscerated bowel with peripheral ecchymosis surrounding large open wound. Massive bleeding with "clampable" vessel
- 3. Shrapnel Wound Arm** with active bleeding, multiple soft tissue wounds, responds to tourniquet application
- 4. Full Amputation Leg** with massive bleeding, extensive soft tissue damage, exposed hard bone, visible tissue layers. Responds to direct junctional pressure and tourniquet application



### BLAST TOMMANIKIN® \*

ITEM #	NSN #
93-0036	6910-01-705-3094

\*Other configurations are available upon request



# GSW (Gun Shot Wound) TOMManikin®

## GSW Wounding Patterns:

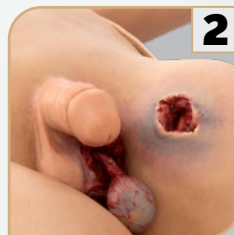
**1. GSW to Chest** with anterior GSW entry & posterior exit. Actively bleeds from both locations. Anterior wound mixes with air from onboard compressor to create bubbling bleeding effect. Supports chest seal application and pleural needle decompression

**2. GSW to Groin** with GSW anterior entry/posterior exit with soft tissue trauma to penis and avulsed scrotum with prolapsed testicle. Wounds present with peripheral wound site ecchymosis, exposed sub-q fat layer and muscle striation. Entry wound is packable and responds to both peripheral and junctional tourniquet application and femoral pressure point application

**3. GSW Leg** with through & through GSW to leg above the knee. Entry wound presents with small entrance hole with circular powder burn. Exit wound has exposed fat and wound site ecchymosis. Variable bleeding rate. Responds to both peripheral and junctional tourniquet application and femoral pressure point application. Can be used as an impaled object using steel rebar, or wooden stake

**4. Full Amputation Leg (Option)\*\*** with massive bleeding, extensive soft tissue damage, exposed hard bone, visible tissue layers. Responds to direct junctional pressure and tourniquet application

*\*Other configurations are available upon request*



**Addressing injury locations based on US Army study suggesting females who suffer penetrating injuries to chest, abdomen, pelvis have a higher mortality rates than male colleagues**

## TAMikin™ GSW

Female version of TOMManikin™ GSW, with anatomically correct female features and voice

- Injuries located in sensitive areas such as under breast & pubic area as well as the leg
- Parallels GSW TOMManikin's capabilities & wounding patterns



*\*Other configurations are available upon request*

**\*\*Leg Amputation Option**  
93-0369/93-0947

### GSW TOMMANIKIN®\*

OPTION	ITEM #	NSN #
GSW TOMM	93-0040	6910-01-705-2593
GSW TOMM (w/Leg Amputation)	93-0369	6910-01-705-3130
GSW TAMikin™***	93-0039	
GSW TAMikin™***(w/Leg Amputation)	93-0381	

\*\*\*Female version

# TCCC MAN® Simulator

Specifically designed for the application of skills and education utilizing protocols from Tactical Combat Casualty Care (TCCC)

## TCCC Interventions Supported:

- Massive hemorrhage control (tourniquet application and wound packing)
- Chest seal application
- Pleural needle decompression (multiple sites)
- Airway management (NP/OP airways, supraglottic devices, endotracheal intubation)
- Tibial intraosseous site

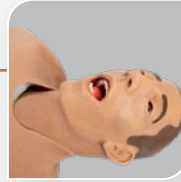
## Wounding Patterns:

**GSW to Chest** with anterior entry and mid-axillary exit wound

**Deep Packable** pelvic wound

**Full Amputation Leg** below the knee. Tourniquet responsive

**Unstable Pelvis** with palpable crepitus



## TCCC MAN® Simulator

ITEM #

93-0958

At 150 lbs. with a welded steel frame, TCCC Man® withstands drops, falls, and drags.



# WATER TOMManikin®

## Wounding Patterns:

**Partial Leg Amputation below the knee** with exposed hard bone, muscle and tissue layers.

## Options:

**GSW to Chest** with anterior GSW entry & posterior exit and active, bubbling bleeding. Supports chest seal application and pleural needle decompression.

-or-

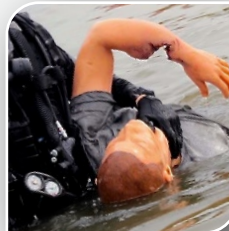
**Packable Abdominal Evisceration** with handcrafted, visible tissue layers, and 10 in. of eviscerated bowel with peripheral ecchymosis surrounding large open wound. Massive bleeding with "clampable" vessel

**Closed Fracture Arm** with ecchymosis and palpable crepitus.

\*Other configurations are available upon request

## WATER TOMMANIKIN®\*

OPTION	ITEM #
Basic (GSW to Chest)	93-0041
ABD Evisceration   Closed Arm Fracture	93-0108



Designed to be submerged up to 33 feet in either fresh or salt water

# CONFINED SPACE TOMManikin®

## Wounding Patterns:

**GSW to Chest** with anterior GSW entry & posterior exit and active, bubbling bleeding. Supports chest seal application and pleural needle decompression.

**Partial Leg Amputation below the knee** with exposed hard bone, muscle and tissue layers.

**Shrapnel Wound Arm** with multiple soft tissue wounds and tourniquet responsive bleeding.

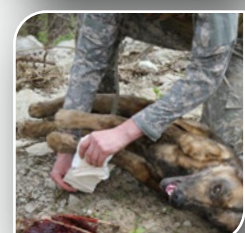
## CONFINED SPACE TOMMANIKIN®\*

ITEM #

93-0110

\*Other configurations are available upon request





# BURN TOMManikin®

## Wounding Patterns:

**Burn Face\*\*** with 1st, 2nd, 3rd-degree burns to face that supports all airway adjuncts. *Head skin is interchangeable with other TOMManikins*

**Burn Arms** with 1st, 2nd, 3rd-degree circumferential burns to both arms

### BURN TOMMANIKIN®\*

ITEM #
93-0037

**\*\*Head skin is interchangeable with other TOMManikins**

*\*Other configurations are available upon request*

# CBRNE TOMManikin®

## Wounding Patterns:

**Burn Face\*** with 1st, 2nd, 3rd-degree burns to face that supports all airway adjuncts. *Head skin is interchangeable with other TOMManikins*

**GSW to Chest** with anterior GSW entry & posterior exit. Actively bleeds from both locations. Anterior wound mixes with air from onboard compressor to create bubbling bleeding effect. Supports chest seal application and pleural needle decompression

**Abdominal Evisceration (Wearable Moulage)** with intricate handcrafted attention to anatomical detail with visible tissue layers, and 10 in. of eviscerated bowel with peripheral ecchymosis surrounding large open wound. Massive bleeding with 'clampable' vessel.

**GSW to Groin** with GSW anterior entry/posterior exit with soft tissue trauma to penis and avulsed scrotum with prolapsed testicle. Wounds present with peripheral wound site ecchymosis, exposed sub-q fat layer and muscle striation. Entry wound is packable and responds to both peripheral and junctional tourniquet application and femoral pressure point application

### CBRNE TOMMANIKIN®\*

ITEM #
93-0038

*\*Other configurations are available upon request*

# K9 Medical Simulator

## K9 Features:

- Welded steel skeleton, with solid metal joints
- Expanded joint range of motion
- CPR chest
- 5 interchangeable limbs with various injuries: Complete Amputation, Open Fracture, Soft Tissue Injuries, Road Rash/Burns, & Gunshot Wound
- Life-like airway
- Barks, Bleeds & Breathes
- 1L onboard blood capacity
- Wireless operation via NARS tablet
- Includes K9 wearable wound vest with interchangeable injuries



See full set of included injuries at [NARescue.com](http://NARescue.com)

### K9 MANIKIN

ITEM #	NSN#
93-0027	6910-01-706-0307

# Deluxe ALS KIT

Designed to simulate various vital signs for advanced life support monitoring and simulation

## Features:

- Simulated NIBP cuff, SpO<sub>2</sub> finger probe, and ETCO<sub>2</sub> inline detector with waveform and digital value
- Simulated cardiac monitor screen with Lead II tracing rhythm
- ETCO<sub>2</sub> & SpO<sub>2</sub> waveforms, NIBP. Fully functional monitor screen for defibrillation/AED mode, alarms, and rhythm synchronization
- All student-visible values controlled via NARS Instructor tablet (included)
- NARS software includes exportable student evaluation performance documentation



Disconnect your student's dependency on instructor "over-the-shoulder" input

## PATIENT MONITORING SUITE with NARS Instructor Tablet

NARS Patient Monitoring Suite of simulators can be used in all phases of patient care for any human (role-player), or ANY patient simulator

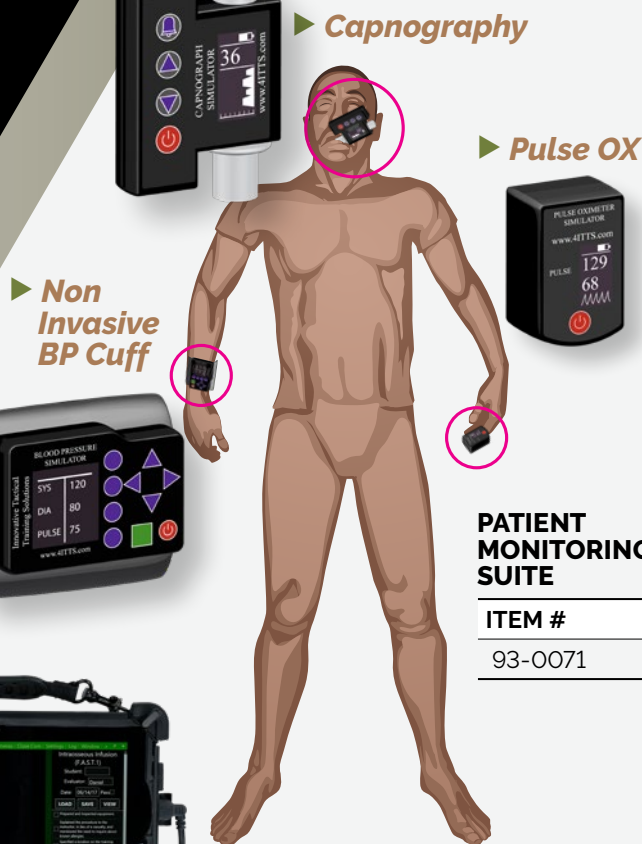
## Features include:

- **NARS Capnograph Simulator**  
Designed to be used as a mainstream carbon dioxide monitor that can be connected in-line with a mask or tube. Simulator displays include carbon dioxide partial pressure, respiratory rate and CO<sub>2</sub> waveform.
- **NARS Pulse Oximeter Simulator**  
Utilizes the widely used finger-style probe for monitoring blood oxygen saturation. Simulator display includes Heart Rate, SpO<sub>2</sub> and SpO<sub>2</sub> waveforms.
- **NARS NIBP Monitor Simulator**  
Designed to replicate a portable NIBP monitor. This simulator allows medical responders to gather vital signs without instructor intervention. Onboard controls allow various modes of operation. Display includes systolic & diastolic pressures (mmHg) and heart rate.

## DELUXE ALS KIT

ITEM #

93-0351



▶ Capnography

▶ Pulse OX

▶ Non Invasive BP Cuff

## PATIENT MONITORING SUITE

ITEM #

93-0071

◀ Includes NARS Instructor Tablet







# MOBILE FEEDBACK SYSTEM \*requires AC power

**Standalone mobile platform to capture simulation events\***

**Features include:**

- Pelican 1650 case with custom-cut foam to protect all system components
- 2 x Cameras
- 2 x 72 in. Telescopic Tripods with camera mounts
- 3 x Terabyte stand-alone recorder
- 1 x NARS mil-spec rated Instructor Tablet for wireless communications
- Proprietary software with instructor bookmark/replay feature, simulator status capture, trainee biometric capture, trainee evaluation software (exportable reports)
- 2 x 25 ft. CAT-6 retractable cord reels
- Trainee-worn stress monitor
- Features streaming participant heart and respiratory rate



**Features:**

- Student wearable system that allows instructors to “live monitor” up to 4 students’ heart and respiratory rates
- 4 student kit w/puck, harness & software
- Includes monitor ‘pucks’, charging cradles, harness, and USB cables
- Requires NAR Tablet and software (not included)



**MOBILE FEEDBACK SYSTEM**  
**ITEM #**  
 93-0945



**WEARABLE TRAINEE STRESS MONITOR**  
**ITEM #**  
 93-0273

# WEARABLE TRAINEE STRESS MONITOR



# MASTER TCCC SKILLS



## V-PIT™ Virtual Patient Immersive Trainer

### FOR MEDICAL SIMULATION TRAINING ENVIRONMENTS

#### Specs

- Virtual patient designed to match a partial set or full range of physical TOMManikin® configurations
- Student gaze tracking with instructor verification
- Virtual interventions
- Multi-stage conditions with physiological progression
- Integration between virtual patient physical TOMManikin®
- Remote control NAR Simulation tablet and hub
- Simultaneously supports up to 4 Hololens headsets (requires separate purchase of individual Hololens)

#### Dimensions

- Packaged - W 27.5 in. x L 16.25 in. x D 8.75 in.
- Weight 12 lbs

#### A TCCC Training Regimen to Match the Modern Battlefield

Working in partnership with North American Rescue, Unveil has developed the Virtual Patient Interactive Trainer (V-PIT)™. The V-PIT is an augmented reality training system that enhances the visual presentation of patient conditions. The V-PIT highlights patient visual cues that are hard to replicate in traditional training, such as altered mental status, respiratory distress, progression of shock and tissue swelling. In addition, V-PIT's rapid delivery of scenarios and real-time data capture of training sessions makes TCCC training more efficient.

#### Debrief with Confidence

The V-PIT supports gaze tracking and scenario reporting data. As the student progresses through the scenario, data is continuously captured to reflect where on the virtual patient the student was looking. Data is automatically stored in each student's record to easily review where improvements can be made. Implementation of physical interventions is also automatically stored for quick review of each student's skill set. This time-stamped record allows for more effective after action reviews to reinforce positive decisions and actions taken by the student, as well as to identify opportunity areas.

#### Ideal for the Crawl and Walk phases of TCCC Training

V-PIT helps instructors move trainees through the "crawl" phase of training by facilitating the rapid delivery of multiple augmented reality scenarios. More than 70 injury combinations are available, with emphasis placed on the three most prevalent battlefield killers: exsanguination, airway obstruction, and tension pneumothorax.

This rapid immersion helps students develop fast recognition skills and mentally rehearse the activities and interventions that will be needed in the real world environment. Instructors can then move students to the "walk" phase by connecting the V-PIT to the TOMManikin®. Developed to work together, trainees can now leverage the V-PIT to connect doctrine and diagnostic skills with physical interventions via the TOMManikin®. As the virtual patient changes, the TOMManikin® automatically updates to reflect changes in breathing, pulse, bleeding and oxygenation levels. The combined system provides virtual and hands-on training to best prepare your emergency medical trainees.

#### VIRTUAL PATIENT IMMERSIVE TRAINER (V-PIT)

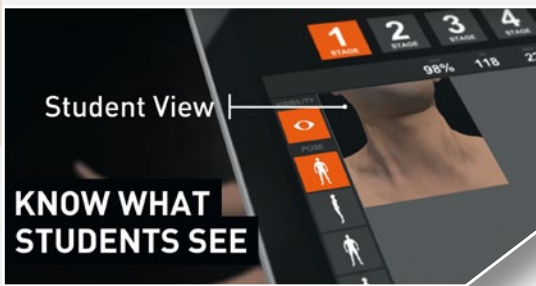
ITEM #

93-0269

#### ADDITIONAL MICROSOFT HOLOLENS 2 W/ V-PIT

ITEM #

93-0391



**KNOW WHAT STUDENTS SEE**

\* Clients can create custom packages of software scenarios that add the greatest value to their current simulation training. Initial purchase provides access to base content, subscription renewal required for updates and support.



**REAL-TIME REPORTS**

Patented Tracking Technology

## BASE TCCC PACKAGE COVERS 65 SCENARIOS INCLUDING

- Tension Pneumothorax
- Exsanguination
- Airway obstruction
- Penetrating GSW
- Non-Penetrating GSW
- Blunt force trauma
- Extremity amputation
- Severe Burns
- Blast trauma

## V-PIT PACKAGE INCLUDES

- Microsoft Hololens 2 (Enterprise Edition)
- Virtual Patient Immersive Trainer (V-PIT software suite 1-1.1) with single user license
- V-PIT charger
- NAR Simulation Tablet with charger
- Quick start guide
- Pelican 1605 case for storage and transport. Includes custom cut foam.
- Includes long-life external battery



**TOMManikin COMPATIBLE**



can be used as a **STANDALONE SYSTEM**

Our pre-packaged simulation content is focused on some of the most critical training challenges

**WHAT'S INCLUDED** Your purchase includes all the hardware and software needed to begin training with your existing TOMManikin®

## V-PIT™ PACKAGE

VIRTUAL PATIENT IMMERSIVE TRAINER

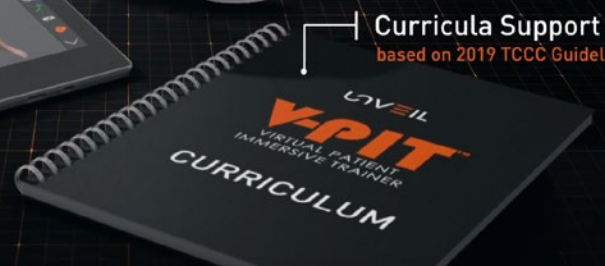


V-PIT™ Software Suite  
Instructor Control Tablet

Microsoft Surface  
with V-PIT Preloaded & Pretested



Microsoft Hololens 2



Curricula Support  
based on 2019 TCCC Guidelines

# AIR BLAST Simulator

## Features:

- Portable system utilizes compressed air to create a simulated blast effect.
- All components housed in a waterproof hard shell case
- Safe for indoor use
- Eco-friendly
- Built-in compressor
- Onboard rechargeable battery and charging system included.



## AIR BLAST SIMULATOR

### ITEM #

93-0291

# SENSORY CONTROL UNIT *without camera*

Built as a rack system, the SCU is self-contained, easily transportable, and will configure to most training environments, especially stationary units (e.g. cargo container and kill houses). The system is completely reusable and easily reset so that training iterations can be run with minimal interruption.

The SCU contains the hardware, software and electrical components required to equip multi-sized simulation environments for a training procedure. To recreate the realism of extrication under fire, the training operator can introduce into the training structure (laptop Master Controller or NARS Tablet) varying intensity of light, smoke (foggers), wind, and sound.

This platform supports the addition of cameras.

## Features:

- 2 hard cases for cables and wireless control devices.
- Upgrade capability for NARS Video Management System.

## Contents:

- **LED light set (x2)**
  - Wireless control
  - Six brilliant amber, blue, red, and white LEDs
  - Clear optic hard-coated polycarbonate lens
  - Stand included
- **Fogger (x1)**
  - Wireless Control
  - Water-based fog/smoke
  - .9-gallon capacity
  - Low fluid indicator
  - Output 20,000 CFM
  - Features low fluid light indicator
  - LED-illuminated tank
  - Automatic shutdown
- **Blower (x1)**
  - Wireless control
  - 3-speed output (2600-4000 CFM)
  - 1HP
- **Loudspeakers (2x)**
  - Wireless control of volume and soundtracks
  - Built-in 1000W amplifier (2000W peak – 1000 continuous)
  - Output: 127dB
- **Air blast simulator (x1)**
- **NARS Tablet (x1)**

The NARS tablet is a ruggedized tablet that communicates with multiple NARS devices via Bluetooth to ZigBee relay.

## SENSORY CONTROL UNIT

### ITEM #

93-0279



# MOBILE ENVIRONMENT CONTROL UNIT

with NARS  
Instructor Tablet

MECU is designed for mobility, and can be set up in a variety of training areas. This is a great option for smaller scale simulation events where dedicated training facilities are not available.



## Features: & Contents:

- 2 hard cases for cables and wireless control devices.
- LED light set (x1)
- Fogger (x1)
- Blower (x1)
- Loudspeakers (x2)
- NARS remote control tablet with proprietary NARS Advanced Remote software

## MOBILE ENVIRONMENT CONTROL UNIT

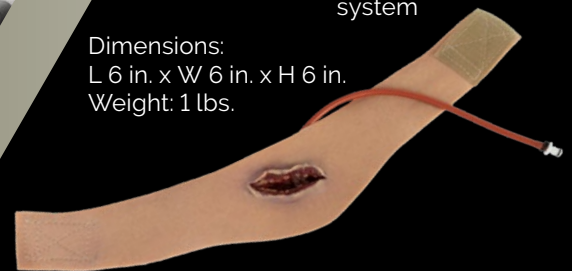
ITEM #

93-0275

## WEARABLE NECK WOUND

- Hook and loop closure
- Exposed fat and muscle layers
- Integrated bleeding system

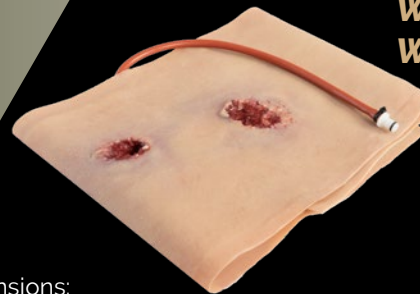
Dimensions:  
L 6 in. x W 6 in. x H 6 in.  
Weight: 1 lbs.



## WEARABLE LEG WOUND - GSW

- Simulates a through and through gunshot
- Bleeds from entry and exit wounds
- Washable and reusable

Dimensions:  
Packaged - L 6 in. x W 6 in. x H 6 in.  
Weight: 3 lbs



# WEARABLE WOUND SIMULATORS

## WEARABLE WOUND SIMULATORS

OPTION	ITEM #
Neck Wound	93-0215
Leg Wound - GSW	93-0212

More wearable wound options available at [NARescue.com](http://NARescue.com)

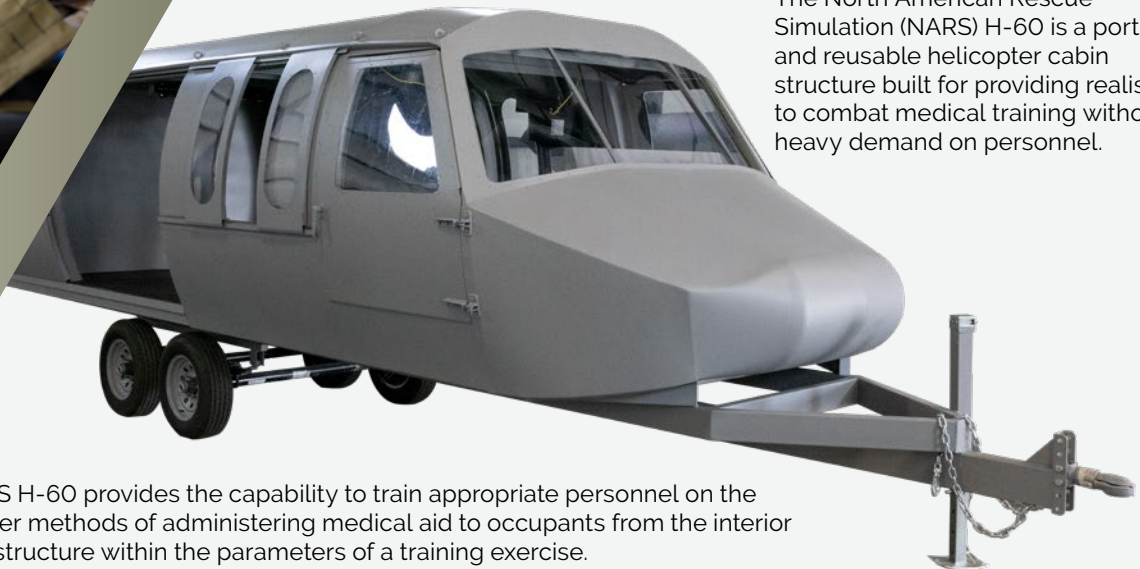
All wearable wound simulators are compatible with both live actors and **TOMManikin®**

# Environments

H-60 | CV-22 | MH-6 | SIMULATION CENTER

## CASEVAC SIMULATOR H-60

The North American Rescue Simulation (NARS) H-60 is a portable, and reusable helicopter cabin structure built for providing realism to combat medical training without heavy demand on personnel.



NARS H-60 provides the capability to train appropriate personnel on the proper methods of administering medical aid to occupants from the interior of a structure within the parameters of a training exercise.

### Features:

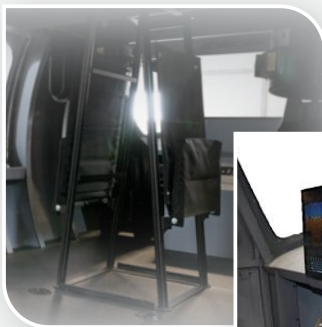
- Equipped with Sensory Control Unit and NARS Tablet
- Allows for combat configuration of equipment
- Train combat loading multiple patients
- Allows for loading patients from Point of Injury
- Simulate treatment during transportation
- Compatible with Fries Bar attachment\*

### Add'l Options Available:

- Fries Bar
- ICS Box (Includes 2 headsets and 15 ft. cords)
- Blackout Window Kit

### Dimensions:

L 25 ft. x H 8.5 ft. x W 6.75 ft.  
Weight: 2200 LBS



\*Fries Bar attachment available for H-60. Visit [NARescue.com](http://NARescue.com) for more info. ▲

### CASEVAC H-60

OPTION	ITEM #	NSN#
H-60	93-0335	6910-01-706-0111
Fries Bar	93-0300	---
ICS BOX	93-0299	---
BLACKOUT KIT	93-0336	---

**NEW** H-60 Cockpit with Realistic Pilot/Co-Pilot Seats and Graphics Panel



# CASEVAC SIMULATOR CV-22

The CV-22T simulator is used to increase efficiencies during the initial point of injury and tactical evacuations phase of care. This advanced simulator provides a variety of options that enhance the simulated battlefield at any location.

## Features:

- Equipped with removeable, Sensory Control Unit and NARS Tablet
- Allows each unit to configure to Standard Operating Procedures
- Cabin height, width, and length to realistic sizes
- Day or night operations
- Treatment platform for CASEVAC training
- Used as a CV-22 crash site
- Black out during daytime operations
- Realistic crew securing landmarks
- Patients can be properly secured on floor
- Reinforced floor rings

## Add'l Options Available:

- ICS Box (Includes 2 headsets and 15 ft. cords)
- Litter Stanchions (set of 2)
- Crew Seats

## Specs & Dimensions:

- A mobile (DOT licensed) trailer that replicates characteristics of CV-22 aircraft
- Tandem Axle design
- Maximum Weight is 14,000 lbs
- Trailer length 35' 7"
- Trailer width 8' 9"
- Trailer height 9' 3"
- Ramp opening trailer for on and off load of patients
- Ramp length will not exceed 7 feet
- Ramp width will not exceed 70 inches
- Interior: L 21 ft. x W 62 in. x H 72 in

CASEVAC  
CV-22

OPTION	ITEM #	NSN#
CV-22	93-0072	---
ICS BOX	93-0299	---
LITTER STANCHIONS	93-0301	---
CREW SEATS	93-0379	---





## LITTLE BIRD **MH-6**

The Little Bird is a portable (reusable), MH-6 size helicopter cabin simulator. It provides a realistic, multi-purpose, platform that accurately depicts real-life extrication situations and enhances medical training in crash scenarios.

The Little Bird, used in conjunction with the TOMManikin and Sensory Control Unit (SCU), provides total integration between the simulated cabin and the environmental factors that can be applied to enhance any training scenario.

### Features:

- Realistic crew securing landmarks, allowing securing of patients
- Reinforced Rings
- Internal fuel tank
- Day or night operations
- High-powered amplifier and speakers to simulate aircraft noise
- High-powered fans simulate rotor wash
- Aircraft lighting (white, green/ blue)
- Sensory Control Unit included
- All functions are controlled via a NARS Tablet (included)
- Submersible version available for aquatic environments

### Dimensions:

L 12 ft. x H 7 ft. x W 6 ft.

Weight: 700 LBS

### MH-6 LITTLE BIRD TRAINING SIMULATOR

OPTION	ITEM #	NSN#
MH-6	93-0295	---
WATER MH-6	93-0293	---

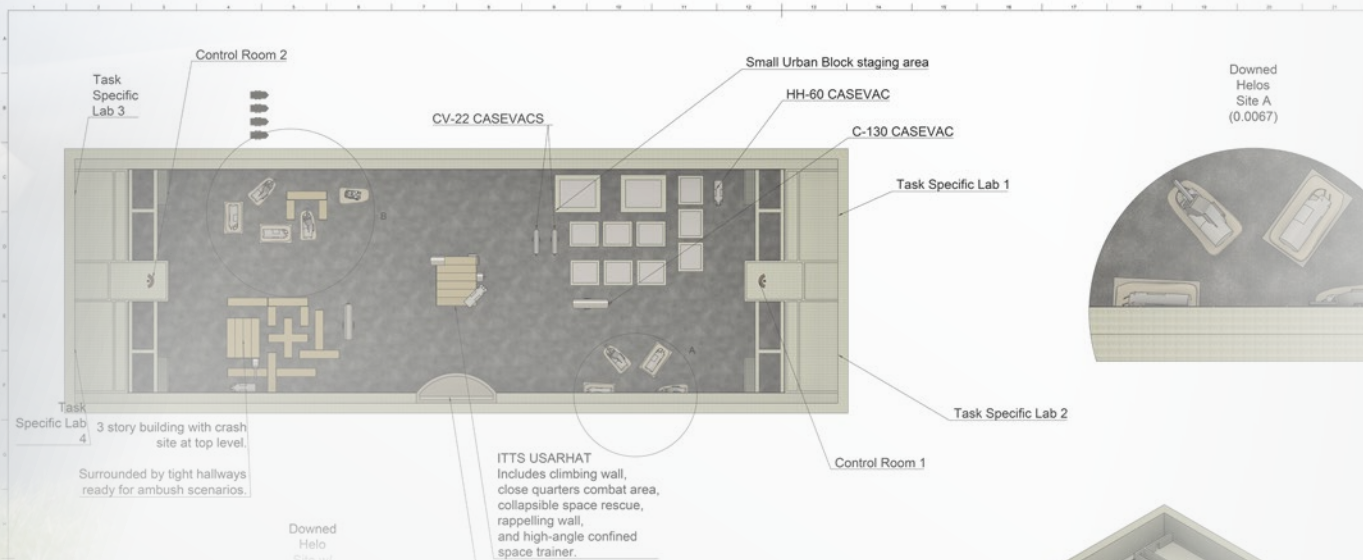


The front compartment features an entanglement trap for the TOMManikin (both pilot and co-pilot). Little Bird has "extractable" doors, providing a realistic obstacle to emergency extractions. To add a sense of stress and the element of surprise to the care-under-fire and extraction experience, the portable NARS Sensory Control Unit (SCU) applies environmental distractions to a training scenario. Remotely controlled via an included NAR Sim tablet, training cadre can introduce, and vary the intensity of, noise and smoke (fogger).



▲ Water MH-6 shown with Water TOMManikin®





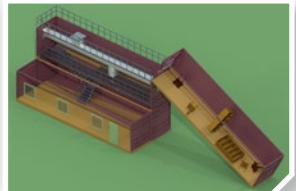
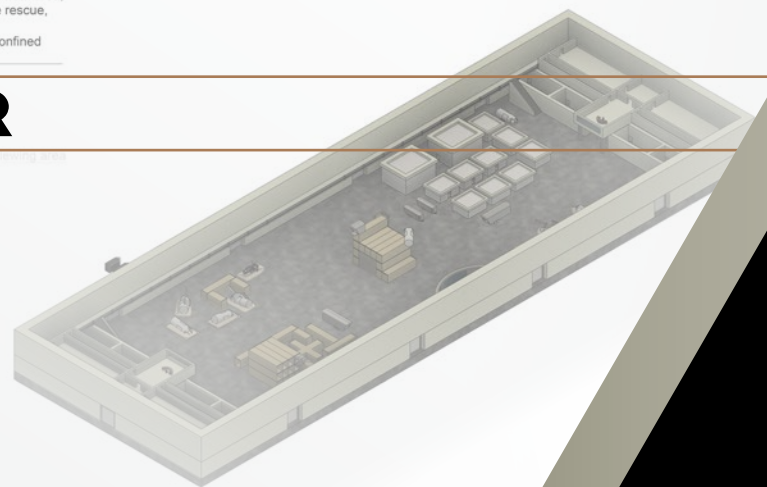
# SIMULATION CENTER

North American Rescue Simulation specializes in working closely with customers who have unique training and simulation training center requirements. We engineer custom, scalable, experiential learning environments from concept design through installation and on-site training.

Simultaneous integration of multiple NARS products and devices create environmentally realistic scenario settings. From care in the streets/POI care, mass-casualty triage, prolonged field care and complex medical/surgical case management, our solutions provide the capability to train personnel in a safe, reproducible environment.

## Simulation Center Features:\*

- Portable, reusable training systems that enhance the realism of combat medical training without heavy demand on personnel.
- Enhances stress inoculation capabilities while training personnel proper methods of administering medical aid to casualties from the interior of any structure, or within the parameters of a training exercise.
- Simultaneous control of all NARS devices from a single control point.
- Welded Steel Frames
- Numerous options available for faux wall styles (Wood, Brick, Stone, etc.)
- Multiple cameras to capture student performance
- Video playback software with bookmarking and annotation features



\*Simulation centers are custom built. Options vary depending on customer's unique needs and budget. Contact NAR Simulation for more information.



## TCCC SKILLS SYSTEM All Combatant

- All the necessary tactical medical and casualty extraction/evacuation equipment needed when teaching the TCCC – All Combatant Skills required tasks for completing the Tactical Combat Casualty Care (TCCC) course
- A turnkey solution for training centers and educational institutions designed to equip up to twenty-five (25) students
- Complete system consists of three self-contained Hard Storage Case modules: **Skill Stations | IFAKS | Evacuation**

### SPECIFICATIONS

Hard Storage Case:  
 External – L 32.5 in. x W 21 in. x D 13 in.  
 Internal – L 29 in. x W 18 in. x D 10 in.  
 Weights: TCCC Skills Set: 55 lb  
 TCCC IFAK Skills Set: 70 lb  
 TCCC Evacuation Skills Set: 50 lb

### TCCC SKILLS SYSTEM

UNIT	ITEM #
TCCC Skills set	80-0968
TCCC IFAK Skills Set	80-0969
TCCC IFAK Skills Kit	85-1958
TCCC IFAK Resupply*	80-1028
TCCC Evac Skills Set	80-0971
<b>3 Modules</b>	<b>80-0970</b>

## TCCC SKILLS SET All Combatant

- Train up to twenty-five (25) students at individual skill stations in the treatment of:
  - Extremity hemorrhage
  - Wound packing
  - Chest seal application
  - Needle chest decompression
  - Basic airway adjuncts
  - Splinting
  - Hypothermia prevention & management
  - Eye injuries



## TCCC IFAK SKILLS SET All Combatant

- Hard case packed with Twenty-five (25) pre-packed Training IFAKs for use during trauma lanes or training scenarios

\* TCCC IFAK Resupply Kit contains all components of the IFAK Skills Kit, excluding the Nylon Bag



### IFAK KIT SPECIFICATIONS

H 7 in. x W 4.5 in. x D 2.75 in.  
 Weight: 2 lb 8 oz



QTY 25 TCCC IFAK Skills Kit

◀ TCCC IFAK Kits Contain qty 1 ea. of the TCCC Skills Set components

### TCCC SKILLS SET & IFAK SKILLS SET MODULES:



QTY 25 C-A-T® Tourniquet, Trainer



QTY 25 NAR ETD® 6 in. Flat



QTY 25 Gauze S-Rolled



QTY 25 Combat Gauze® Trainer



QTY 10 Pre-lubed NAR® Naso, 28F



QTY 12 HyFin® Trainer, Twin Pk



QTY 10 ARS® Needle, 14G



PAIR 25 Nitrile Gloves, Lg



QTY 5 Permanent Marker, Large



QTY 25 Combat Casualty Card



QTY 6 Surgical Tape, 2 in.



Not included in IFAK skills Kits  
 QTY 1 HPMK®



QTY 6 Triangular Bandage



QTY 6 SAM® Splint II



QTY 10 PES Eye Shield



QTY 2 Sharps Shuttle



# TCCC EVACUATION SKILLS SET

- Various high threat extraction devices and casualty evacuation systems to train students in different options to move casualties during the all three TCCC Phases of Care
- Packaged in a self-contained, wheeled, rigid case that allows for easy transport and storage



## TCCC EVACUATION SKILL SET MODULE:

QTY 1 HPMK®	QTY 1 Talon® 90C Litter	QTY 1 R.E.E.L. Litter Black	
QTY 1 Hasty Harness	QTY 1 Rat™ Strap	QTY 1 Dragon Handle System	QTY 1 Carabiner Non-locking



# TCCC CLS KIT SKILLS SET

- Contains pre-packed 5 CLS kits for use by students during trauma lanes or training scenarios
- Each CLS Kit contains the necessary equipment for initial TCCC – CLS care in the standard Army CLS bag with the standard Army CLS packing list
- Individual kits come packed in Squad Responder Bag - Multicam: NAR's alternative to the US Army Combat Lifesaver Bag

## SPECIFICATIONS

Hard Storage Case:  
 External - L 32.5 in. x W 21 in. x D 13 in.  
 Internal - L 29 in. x W 18 in. x D 10 in.  
 Kits:  
 Packaged: L 12 in. x W 10 in. x D 8 in.  
 Open Length: 37.5 in.  
 Weight: 8.6 lbs

## TCCC CLS Skills Set & Kit

UNIT	ITEM #
TCCC CLS Kit Skills Set	80-1212
TCCC CLS Skills Kit	80-1199

## TCCC CLS SKILLS KITS:

QTY 2 C-A-T® Tourniquet	QTY 2 Combat Gauze® Trainer	QTY 2 NAR® Gauze, Compressed	QTY 2 6" Emergency Bandage	QTY 1 Pre-lubed NAR® Naso, 28F	QTY 2 HyFin® Trainer, Twin Pk	QTY 2 ARS® Needle, 14G	QTY 1 Blizzard Survival Blanket	QTY 1 NAR Ready Heat 4-Cell	QTY 1 SAM® Splint II	QTY 1 6" Elastic Bandage	QTY 3 Sterile Dry Burn Cravat
QTY 4 FOX Eye Shield	QTY 2 2" NAR® Surgical Tape	QTY 6 NAR Alcohol Prep Pad	QTY 1 Model 8 Rescue Hook	QTY 1 Trauma Shears, Lg	QTY 2 Scissor Leash™	PAIR 4 Bear Claw Gloves, Lg Tan	QTY 1 First Light TORQ w/ batt.	QTY 2 Permanent Marker, Small	QTY 2 TCCC Foldable Card		

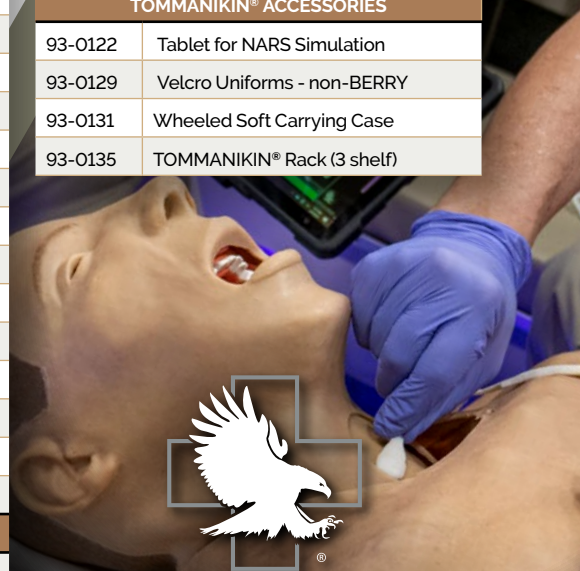
# TOMManikin®

## INDIVIDUAL TOMMANIKIN® COMPONENTS | ITEM NUMBERS

TOMMANIKIN®	
93-0035	Basic TOMMANIKIN®
93-0040	GSW TOMMANIKIN®
93-0369	GSW TOMMANIKIN® w/ Leg Amputation
93-0036	Blast TOMMANIKIN®
93-0037	Burn TOMMANIKIN®
93-0039	GSW TAMikin® (Female)
93-0381	GSW TAMikin® (Female) w/ Leg Amputation
93-0041	Water TOMMANIKIN® Basic
93-0108	Water TOMMANIKIN®
93-0038	CBRN TOMMANIKIN®
93-0110	Confined Space TOMMANIKIN®
TOMMANIKIN® Limbs & Skins	
93-0148	Uninjured Chest Skin
93-0149	GSW Chest Skin
93-0150	Evisceration Chest Skin
93-0151	Pelvic Pants
93-0081	TOMM GSW Groin Skin
93-0082	TOMM uninjured pelvic shorts
93-0152	Uninjured Arm (Rt)
93-0083	Complete Arm Amp (Rt)
93-0084	Partial Arm Amp (Rt)
93-0085	Shrapnel Arm (Rt)
93-0086	Burn Arm (Rt)
93-0087	Closed Fracture Arm (Rt)
93-0088	Uninjured arm (Lt)
93-0089	Complete Arm Amp (Lt)
93-0090	Partial Arm Amp (Lt)
93-0091	Shrapnel Arm (Lt)
93-0092	Burn Arm (Lt)
93-0093	Closed Fracture Arm (Lt)
93-0094	Leg - Uninjured (Rt)
93-0095	Complete Leg Amp (Rt)
93-0096	Partial Amp Leg (Rt)
93-0097	GSW Leg (Rt)
93-0098	Leg - Uninjured (Lt)
93-0099	Complete Leg Amp (Lt)
93-0100	Partial Amp Leg (Lt)
93-0101	GSW Leg (Lt)
93-0155	TAMI Head Skin Uninjured
93-0156	TAMI GSW Chest Skin
93-0157	TAMI GSW Pelvic Shorts
93-0158	TAMI Uninjured Pelvic Shorts
93-0352	Tibial IO Leg (Rt)
93-0353	Tibial IO Skin Plug
93-0354	Tibial IO Bone Insert
93-0405	TAMI Open Jaw Fracture Head Skin
93-0407	TOMM Open Jaw Fracture Head Skin
93-0408	TOMM Burn Face

Wearable Wounds for TOMM	
93-0203	Thigh laceration
93-0204	GSW through hand (Rt)
93-0205	Impaled object
93-0208	Broken jaw with laceration
93-0210	Compound fracture
93-0212	GSW leg
93-0215	Neck wound
93-0223	GSW through hand (Lt)
93-0229	Multiple GSW abdomen
93-0080	Abdominal evisceration (packable)
93-0234	Shrapnel wound axillary (Rt)
93-0235	GSW bicep
93-0236	GSW clavicle (Rt)
93-0396	Simulator Burn Torso
TOMMANIKIN® Adhesive Wounds (Reusable)	
93-0187	Complete Sticky Wound Kit
93-0188	GSW Sticky Wound Kit
93-0189	GS Entry Wound; Small
93-0190	GS Entry Wound; Large
93-0191	GS Exit Wound; Medium
93-0192	GS Exit Wound; Large
93-0193	Laceration Stick Wound Kit
93-0194	Laceration; Medium
93-0195	Laceration; Large
93-0196	Burn Sticky Wound Kit
93-0197	Burn; 2nd Degree
93-0198	Electrical Burn; Medium
93-0199	Chemical Burn; Medium
93-0200	Thermal Burn; Medium
93-0201	Electrical Burn; Large
93-0202	Thermal Burn; Large
Wound-in-a-Box® Simulators	
Get info at <a href="http://NARescue.com">NARescue.com</a>	

TOMMANIKIN® Consumables & Replacement Parts	
93-0102	Bleeding Neck Skins (10 pack)
93-0106	1 Gallon concentrated blood simulant; non-staining
93-0139	5 AMP battery w/o charger
93-0140	5 AMP battery w/charger
93-0141	10 AMP battery w/o charger
93-0143	10 AMP battery w/charger
93-0144	NAR Simulation Smart Charger
93-0147	Non-Bleeding Neck Skins (10 pack)
93-0159	Spare Connectors, TOMM/TAMI
93-0169	Tension Bladder Set
93-0175	Lung Bladder Set
93-0178	IO Humeral Ball Replacement
93-0183	Simulator Blood Fill Tank
93-0185	Bleeding Bag
93-0186	Silicone Repair Kit
93-0264	NIBP Cuff Simulator
TOMMANIKIN® ACCESSORIES	
93-0122	Tablet for NARS Simulation
93-0129	Velcro Uniforms - non-BERRY
93-0131	Wheeled Soft Carrying Case
93-0135	TOMMANIKIN® Rack (3 shelf)



**NORTH AMERICAN RESCUE®**

Simulation

**NAR Simulation Sales**  
**866-839-3455**  
**manikins@NARescue.com**  
**www.NAR-Simulation.com**