

WATER TOMMANIKIN®

BASIC

3-year WARRANTY

Innovative, Cutting-Edge Medical Training

The TOMManikin® / TAMiKin™ (Tactical Operations Medical Manikin), co-developed by NAR Simulation® and Techline Technologies Inc., is an advanced training system which elevates Tactical Combat Casualty Care (TCCC) training from the point of injury through transfer to higher levels of care, delivering unmatched durability and versatility.

Realistic, Mission-Ready Simulation

The TOMM Series enables instructors to build highly realistic, traumatic casualty scenarios with responsive, reactive patients. Its robust design supports use in classrooms, trauma lanes, and demanding field training environments.

FEATURES

Waterproof and Submersion Proof

Water TOMM utilizes a waterproof liner that holds the Main Control Box and other water-sensitive equipment. It is manufactured from the heavy-duty nylon trilaminate. The bag comes with an oral inflator. The bag is a top loader and has two strong nylon carrying handles.

Material:

- Heavy-Duty Nylon Trilaminate (TLS)
- YKK Waterproof Zippers
- Liquid Seam Sealing Technology

Versatile Wounding Patterns

- Multiple, interchangeable appendages simulate gunshot wounds, blast injuries, burns, and more
- Supports realistic mission profiles for combat operations, disaster simulations, and mass casualty training

Durable, Rugged Construction

- Built with silicone and a welded steel frame.
- Weighs **160–190 lbs.** (configuration dependent)
- Extremities withstand up to **6,000 lbs.** of pressure — ideal for confined spaces, collapsed structures, and care under fire

Advanced Remote Control & Feedback

- Includes NAR Simulation Advanced Remote Tablet & Software to control up to 12 units wirelessly
- Manage bleeding, breathing, voice responses, pulse rate/pressure, and realistic patient reactions

Comprehensive Intervention Capabilities

- Tourniquet application (proximal, junctional, abdominal)
- Wound packing with bleeding control
- Airway management (NPA, OPA, supraglottic, intubation, surgical airway).
- Bilateral needle decompression & chest tube insertion
- IV/IO access (sternal, humeral, antecubital)
- Realistic chest seal placement, radial and carotid pulses, variable rates and pressures

Field-Ready Power & Fluids

- Onboard 12V rechargeable NiMH batteries with chargers
- **1.2 gallon** (4.5 liters) onboard blood reservoir for multiple bleeding sites

Voice & Communication

- Upload custom voice tracks in any language
- 2-way instructor communication via Bluetooth® headset

Water-Resistant & Low Maintenance

- Designed for tough environments with quick setup, rapid reset, and minimal upkeep



DIMENSIONS

- Carrier Bags (2 x): L 42" x W 24" x H 16"
- Assembled Manikin: L 74" x W 24" x H 10"
- Weight: 160–190 lbs. (configuration dependent).



Learn more about this and other Products with a Mission® at www.NARescue.com

WATER TOMMANIKIN®

ITEM #	NSN
93-0041	----

* Explore more TOMManikin® and TAMiKin® options at www.NARescue.com



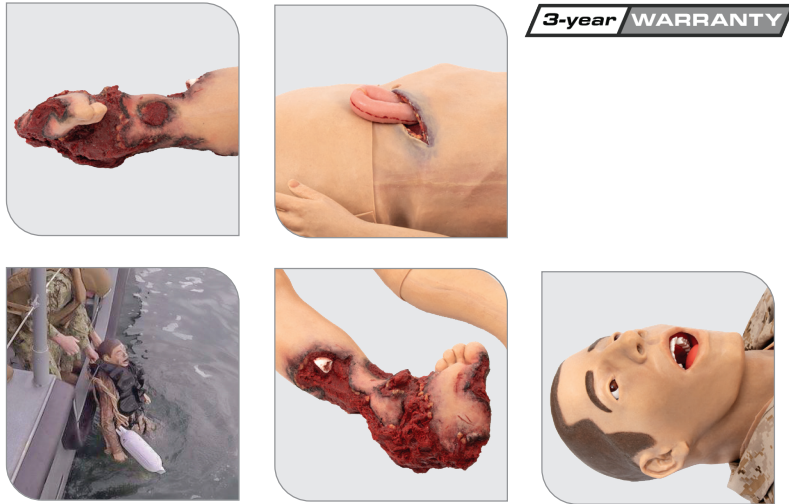
NORTH AMERICAN RESCUE®
www.NARescue.com • 888.689.6277

WATER TOMMANIKIN®

BASIC

Train Real. Train Ready.

From urban tactical operations to disaster response and combat casualty care, the TOMManikin® / TAMiKin™ provides the realism, durability, and control you need to build confident, capable responders.



SPECIFICATIONS

FEATURE	DETAILS
Power	12V / 5A & 10A NiMH rechargeable batteries (with chargers)
Control Range	Wireless tablet controls up to 12 units
Blood Reservoir	1.2 gallon onboard
Weight	160-190 lbs.
Breathing	Realistic bilateral chest rise; remote control of rates (slow, normal, fast)
Pulse Simulation	Radial & carotid pulses; variable rate & pressure
Durability	Welded steel frame, solid steel joints, rugged silicone skin
Warranty	3-year manufacturer's warranty

WATER TOMM PACKAGE INCLUDES

- Waterproof Protected Main Control Box with Air Bottle System
- Land Main Control Box with onboard air compressor
- NAR® Simulation Advanced Remote Tablet & Software
- 1.2 gallon onboard blood reservoir
- Pelican 1500 accessories case
- 12V NiMH batteries (5AH & 10AH) with smart chargers
- T-handle tool & fluid connectors
- Hook & Loop training uniform
- NAR IFAK
- 35 'bleeding' operative sites
- Instructor Bluetooth® headset
- TOMManikin® Operator's Manual
- Two 3-wheeled carrier bags

OPERATIONAL MEDICAL PROCEDURES

- Tourniquets (peripheral & junctional tourniquets)
- Nasopharyngeal and oral airways
- Surgical airway with realistic bleeding and tissue dissection
- Remote controlled breathing rates: Slow, Normal, and Fast
- Bilateral Needle decompression at either 2nd/3rd intercostal (mid-clavicular), or 5th/6th intercostal (mid-axillary) locations
- Chest Tube capable (bilateral, all models – upon request)
- Radial pulses in uninjured upper extremities and carotid
- Variable pulse rate & pressure (Normal, bounding, thready)
- IO (sternal & humoral) and IV access on uninjured upper extremities
- Packable evisceration
- Wound packing with realistic bleeding control

INJURIES INCLUDED:

- 10 in. of eviscerated bowel with peripheral ecchymosis surrounding large open wound
- Closed fracture arm
- Partial leg amputation below the knee
- Massive soft tissue trauma with exposed hard bone, muscle and tissue layers
- Unstable pelvis with palpable crepitus

Learn more about this and other Products with a Mission® at www.NARescue.com



WATER TOMMANIKIN®

ITEM #	NSN
93-0041	----

Contact us today to learn more or request a live demonstration.
www.narescue.com/nar-simulation



NORTH AMERICAN RESCUE®
www.NARescue.com • 888.689.6277