

TECHLINE TRAUMA COMPLETE SMALL SELF ADHESIVE WOUND KIT

Minimizes Moulage Requirements – While Maximizing Realism.

The Techline Trauma® Complete Small Self Adhesive Wound Kit from North American Rescue® Simulation and Techline Technologies, Inc., is a silicone prosthetic kit enabling live action role players to simulate a real-world injuries like gunshot wounds, lacerations, and burns. The soft, flexible, light toned skin comfortably applies to role players and manikins with the self-adhesive backing. Enhancing realism creates a valuable training event that better prepares first responder trainees for real-world situations. Easily cleaned and reusable, this tool enables rapid preparation for training exercises and minimizes moulage requirements – while maximizing realism. If the wound becomes dirty, simply wash with warm soap and water to "reactivate" the self-adhesive backing.

The Techline Trauma® Self Adhesive Wound Kit is manufactured by Techline Trauma® and is compatible with all TOMManikin® and TAMiKin® simulators.

DIMENSIONS

- GSW Entry – Small: L 2.25 in. x W 2.25 in. x D 0.13 in.
- GSW Entry – Large: L 3 in. x W 3 in. x D 0.13 in.
- GSW Exit – Medium: L 2.5 in. x W 2.5 in. x D 0.13 in.
- GSW Exit – Large: L 3 in. x W 3 in. x D 0.13 in.
- Laceration – Medium: L 4.5 in. x W 5 in. x D 0.13 in.
- Laceration – Large: L 6.5 in. x W 5 in. x D 0.5 in.
- Burn 2nd Degree: L 7 in. x W 5.5 in. x D 0.13 in.
- Electrical Burn: – Medium L 6.25 in. x W 3.5 in. x D 0.13 in.
- Chemical Burn: – Medium L 5 in. x W 4 in. x D 0.13 in.
- Thermal Burn: – Medium L 4.5 in. x W 3 in. x D 0.13 in.
- Electrical Burn: – Large L 7.25 in. x W 4.75 in. x D 0.13 in.
- Thermal Burn: – Large L 6.75 in. x W 5.5 in. x D 0.13 in.

- Total Kit Weight: 12 lbs.
- Total Kit Dimensions: L 13 in. x W 9.5 in. x H 2.25 in.

Learn more about this and other Products with a Mission® at www.NARescue.com

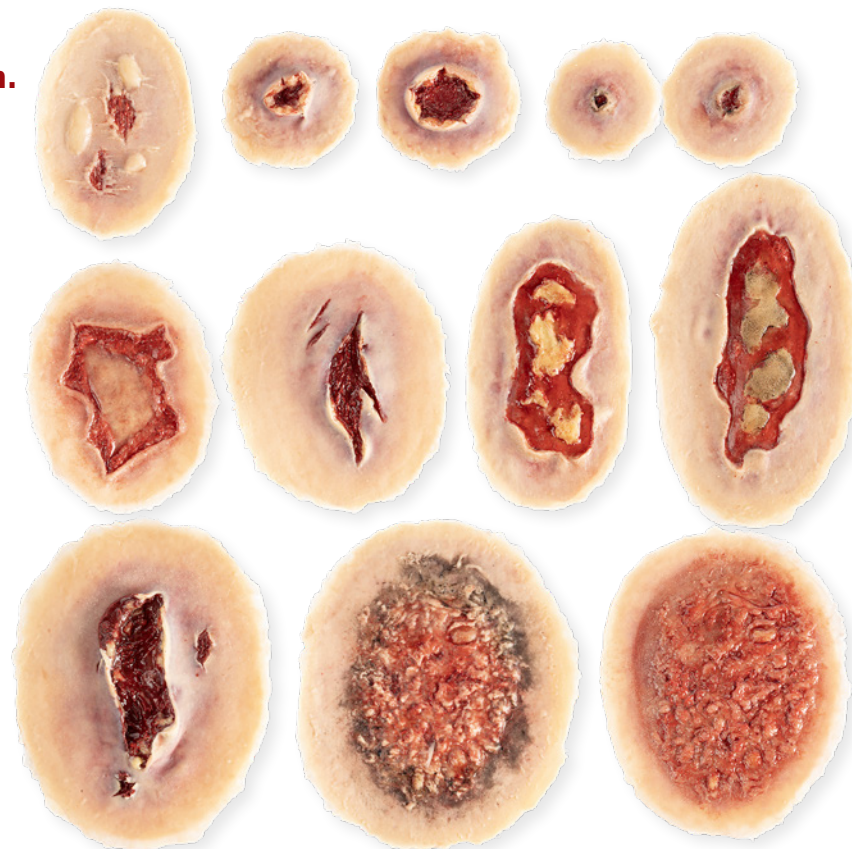


COMPLETE SMALL SELF-ADHESIVE WOUND KIT

ITEM #

93-0187

* Explore other Techline Trauma products at www.NARescue.com



FEATURES/SPECIFICATIONS

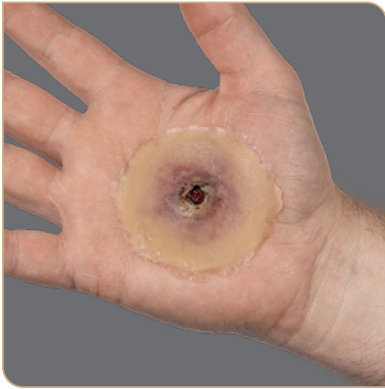
- Washable and Reusable
- Small and Large Entrance and Exit GSW Wounds
- Multiple Types of Burns: Electrical, Chemical, Thermal, 2nd Degree
- Small and Large Lacerations
- Total of 12 wounds included; each wound is made from 100% silicone
- Training-Ready out of the box

TECHLINE TRAUMA COMPLETE SMALL SELF ADHESIVE WOUND KIT

Learn more about this and
other Products with a Mission®
at www.NARescue.com



GSW Entry - Small



GSW Exit - Medium



GSW Entry - Large



GSW Exit - Large



Laceration - Medium



Laceration - Large



Burn 2nd Degree



Chemical Burn: - Medium



Electrical Burn: - Medium



Electrical Burn: - Large



Thermal Burn: - Medium



Thermal Burn: - Large

