

# TECHLINE TRAUMA BURN TORSO SIMULATOR ADHESIVE - LARGE

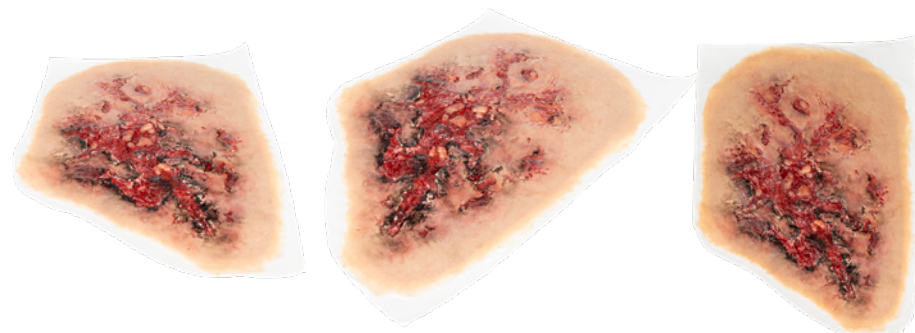
Learn more about this and other Products with a Mission® at [www.NARescue.com](http://www.NARescue.com)



## Optional Action Statement or Major Fact

The Techline Trauma® Large Burn Torso Simulator Adhesive features first, second, and third degree burns. The adhesive burn measures 10 in. x 14.5 in. area. This moulture represents an approximate five percent total body surface area (TBSA). Molded from rugged materials that feature realistic injury deformities and are reusable and washable.

The Techline Trauma® Large Burn Torso Simulator is manufactured by Techline Trauma® and is compatible with all TOMManikin® and TAMILkin® simulators.



## FEATURES/SPECIFICATIONS

- Features first, second, and third degree burn areas.
- Represents an approximate 5% total body surface area (TBSA)
- Washable and reusable

## DIMENSIONS

- Packaged - L 6 in. x W 6 in. x H 6 in.
- Weight: 2 lbs

## BURN TORSO SIMULATOR ADHESIVE

ITEM #	NSN
93-0396	----

\* Explore other Techline Trauma products at [www.NARescue.com](http://www.NARescue.com)



**NORTH AMERICAN RESCUE®**  
[www.NARescue.com](http://www.NARescue.com) • 888.689.6277