

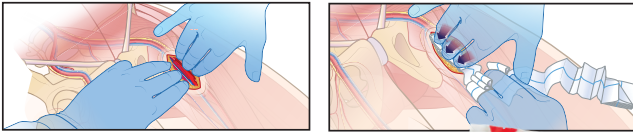


NORTH AMERICAN RESCUE®

www.NARescue.com • 888.689.6277

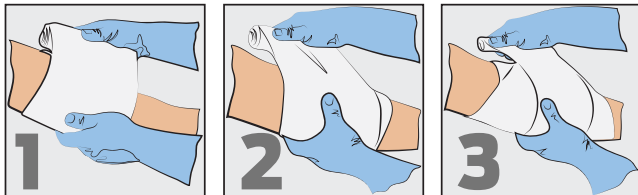
INSTRUCTIONS FOR USE

Apply Wound Packing Gauze & Compress



1. Find bleeding source and apply direct pressure.
2. Fill entire wound with gauze while maintaining constant pressure.
3. Hold pressure until first responders arrive.

Responder Emergency Trauma Dressing (ETD®)



Place Pad over the Wound

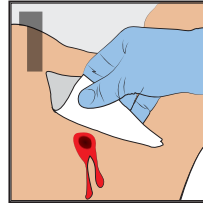
Wrap around the Limb, covering the pad

Pull ETD® Firmly, and continue to Wrap, covering the wound completely

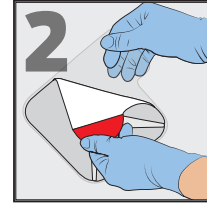
Secure with velcro style fastener when wrap is complete

Open Chest Wound

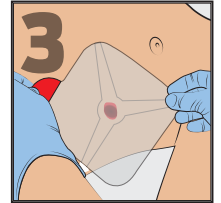
Apply HyFin® Chest Seal (*Intermediate & Advanced Kits*)



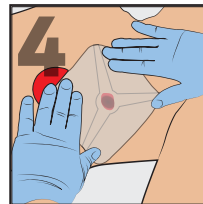
Wipe Wound with gauze



Peel Seal from Backing using Red Tab



Center over wound



Firmly Press onto skin

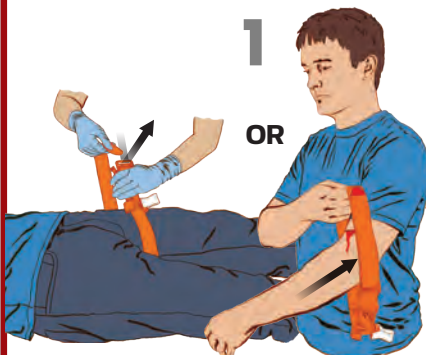


Wrap Survival Blanket

1. Place the blanket over the patient
2. Tuck the edges in
3. Ensure that breathing is not inhibited



Major Bleeding on Arm or Leg Apply C-A-T® Tourniquet



TWO-HANDED APPLICATION
Route the band around the limb, **pass the red tip through the slit of the buckle**, and position the C-A-T® 2-3" above the bleeding site directly to the skin.*

OR

ONE-HANDED APPLICATION
Insert the injured limb through the loop in the band and position the C-A-T® 2-3" above the bleeding site directly to the skin.*



Pull band tightly and fasten it back on itself all the way around the limb, but not over the rod clips.



Twist the rod until bleeding has stopped.

Band should be tight enough that **tips of three (3) fingers CANNOT be slid between the band and the limb**. If the tips of three (3) fingers slide under band, retighten and re-secure.



Secure the rod inside a clip to lock it in place. Check for bleeding and distal pulse. If bleeding is not controlled, or distal pulse is present, consider additional tightening or applying a second C-A-T® above and side-by-side to the first. Reassess.



Route the band between the clips and over the rod. Secure rod and band with TIME strap. Record time of application.

*If you cannot be sure or cannot take the additional time to examine where the bleeding is coming from based on the situation, the C-A-T® can be effectively applied over clothing as high on the arm or leg as possible. The C-A-T® must NOT be applied over solid objects within the clothing. As soon as the situation permits, the injured limb should be evaluated and the C-A-T® re-positioned 2"-3" above the injury directly to the skin.